



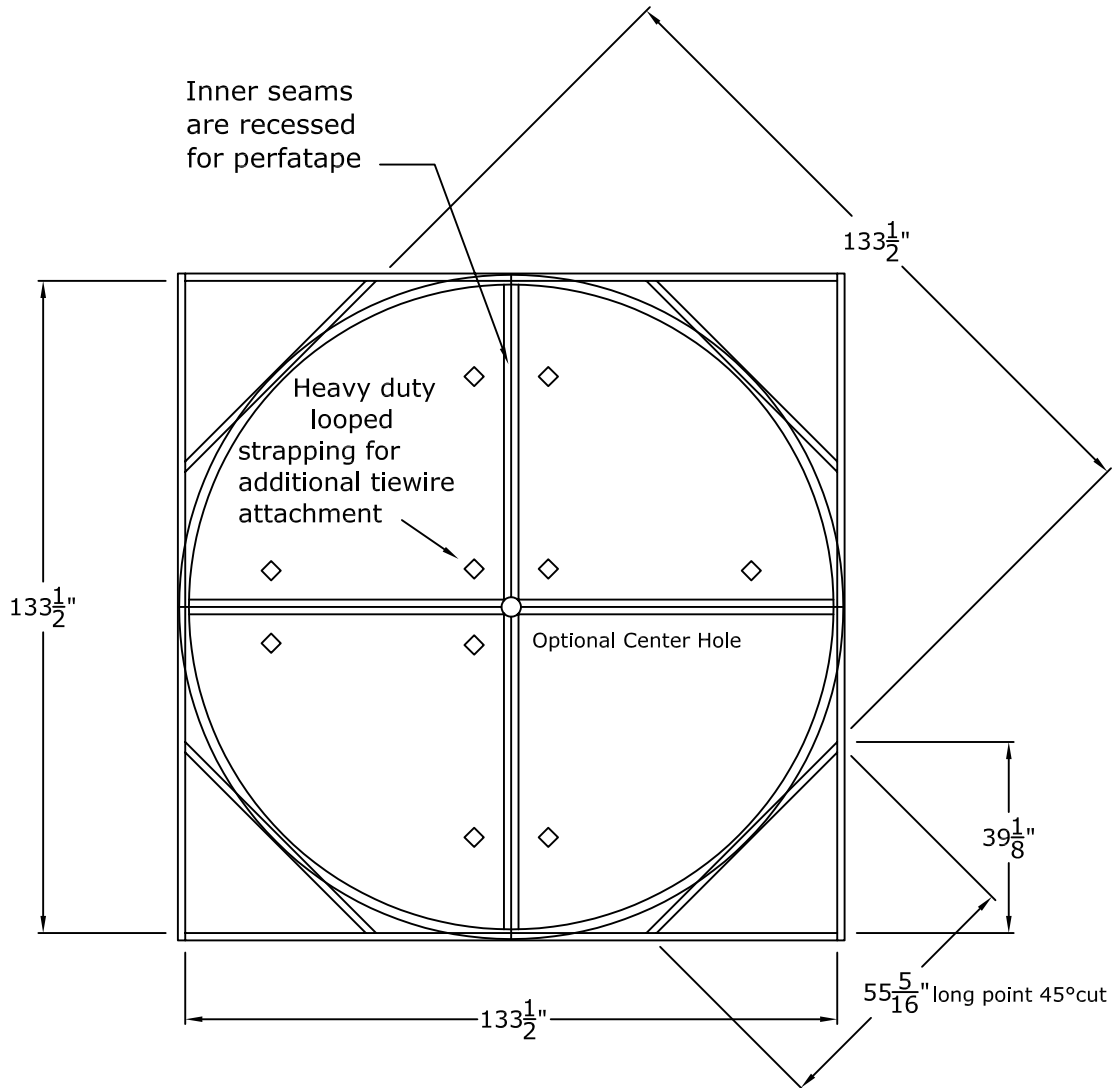
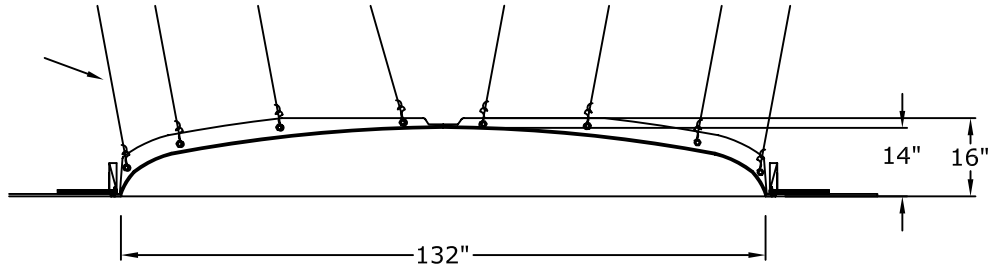
© Copyright 2012

RWM Inc.

6419 South Cottonwood Street, Murray, Utah 84107
 Phone: 801-268-2400 Toll Free: 1-855-RWM-ARTS (796-2787)
 Fax: 801-268-2522 E-mail: info@rwm-inc.com
 Visit our website at www.rwm-inc.com

11 Foot Round Recessed Dome: 4 Parts with a 16" Overall Rise

Drill through both bolt flanges for permanent #9 tiewire anchorments (we recommend a minimum of two per flange)





© Copyright 2013

RWM Inc.

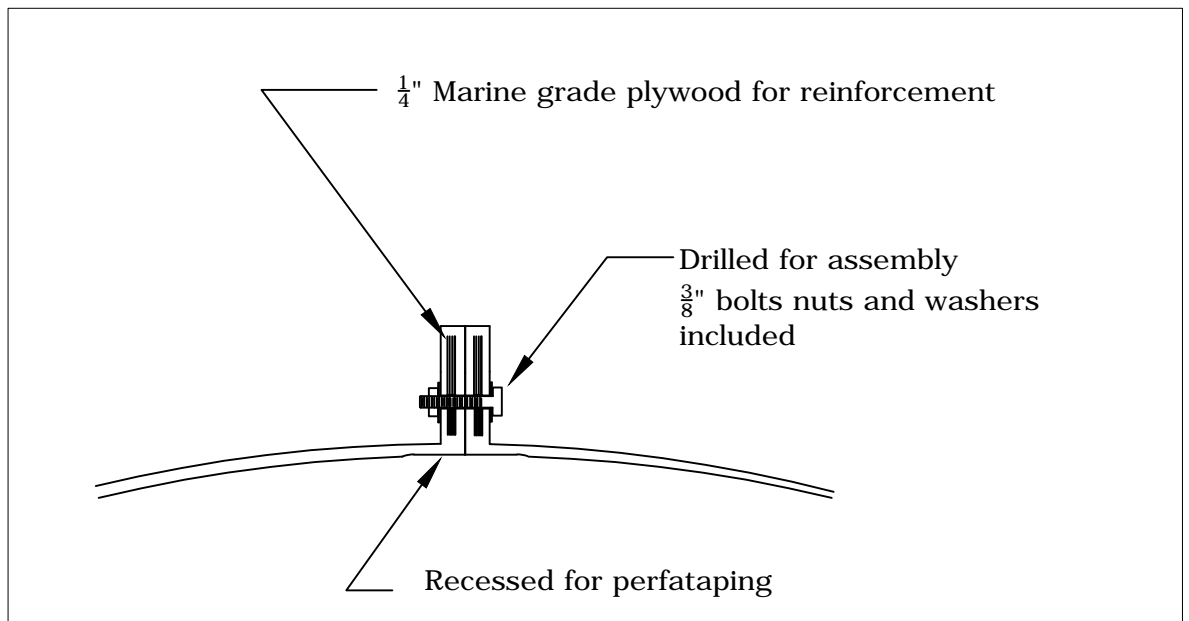
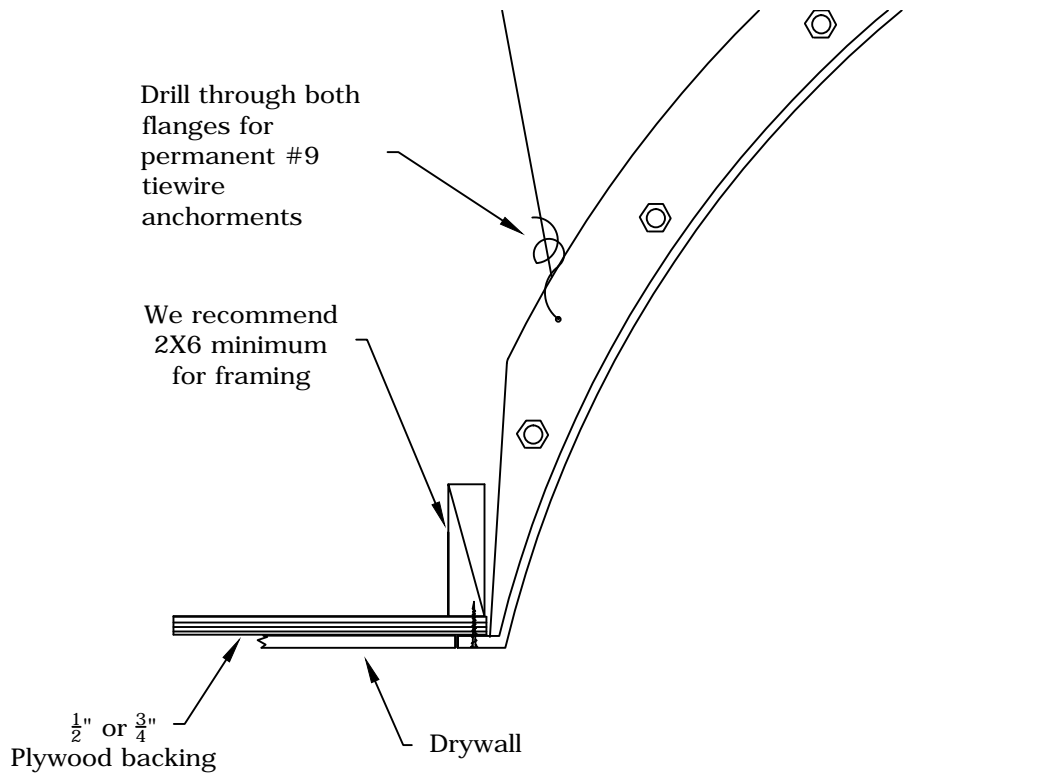
6419 South Cottonwood Street, Murray, Utah 84107

Phone: 801-268-2400 Toll Free: 1-855-RWM-ARTS (796-2787)

Fax: 801-268-2522 E-mail: info@rwm-inc.com

Visit our website at www.rwm-inc.com

Anchor Flange For Multi-Piece Domes



Bolt Flange Section



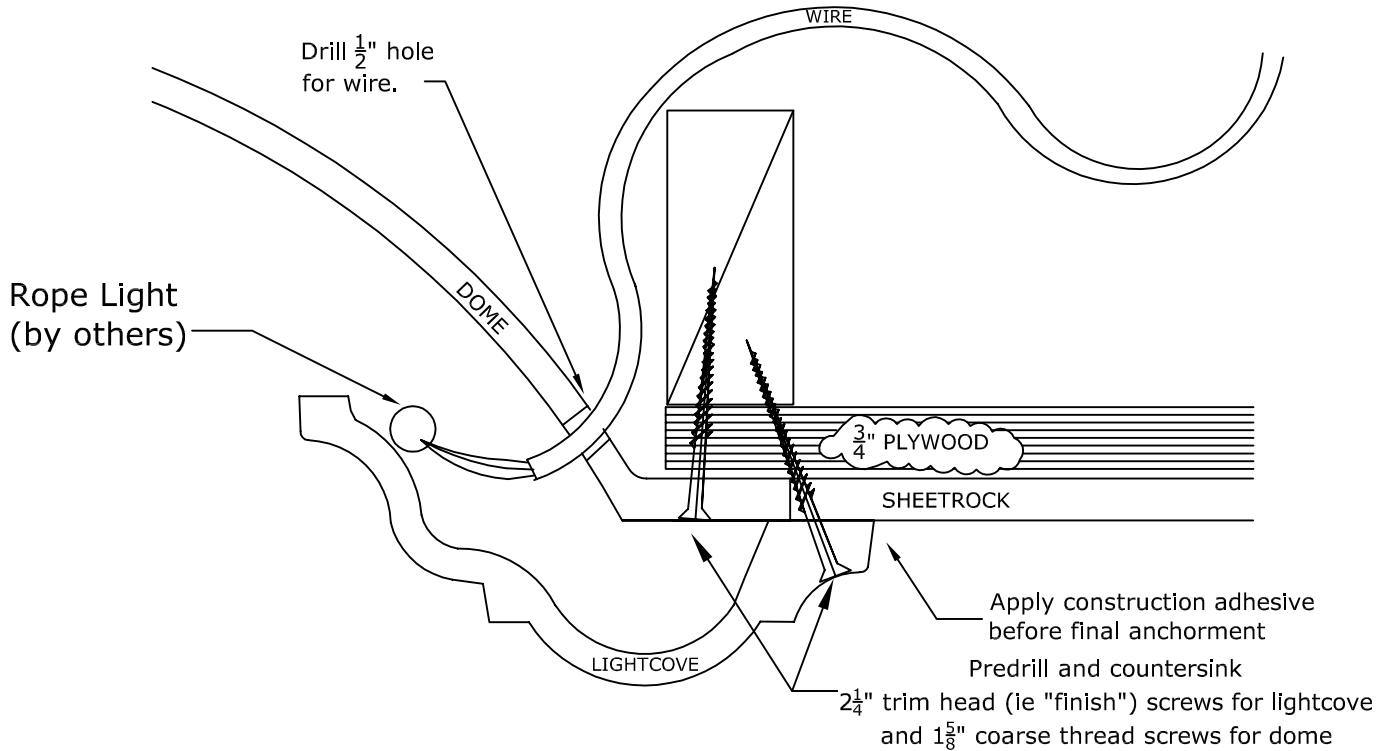
© Copyright 2017

RWM Inc.

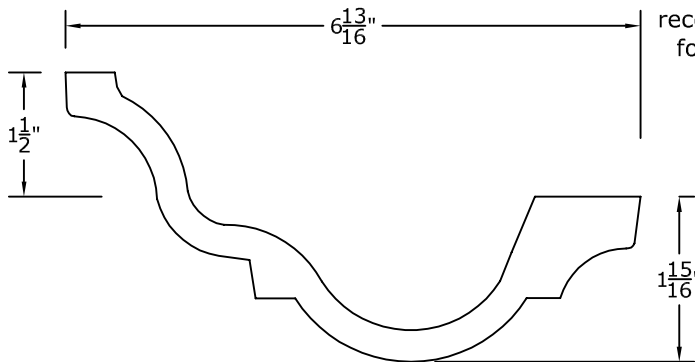
6419 South Cottonwood Street, Murray, Utah 84107
 Phone: 801-268-2400 Toll Free: 1-855-RWM-ARTS (796-2787)
 Fax: 801-268-2522 E-mail: info@rwm-inc.com

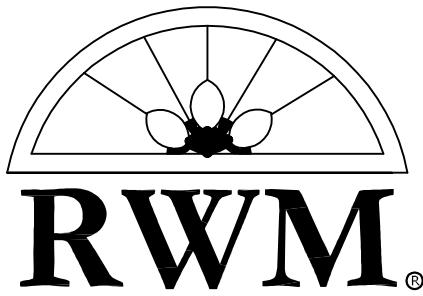
Visit our website at www.rwm-inc.com

Traditional Lightcover: For Select Larger Domes



We recommend a minimum of one point of anchor every 16" on lightcover. This is in addition to a minimum of one point of anchor every 16" for the dome bottom flange, and the recommended minimum of tiewire attachments for the dome. Check the spec sheet for your dome.





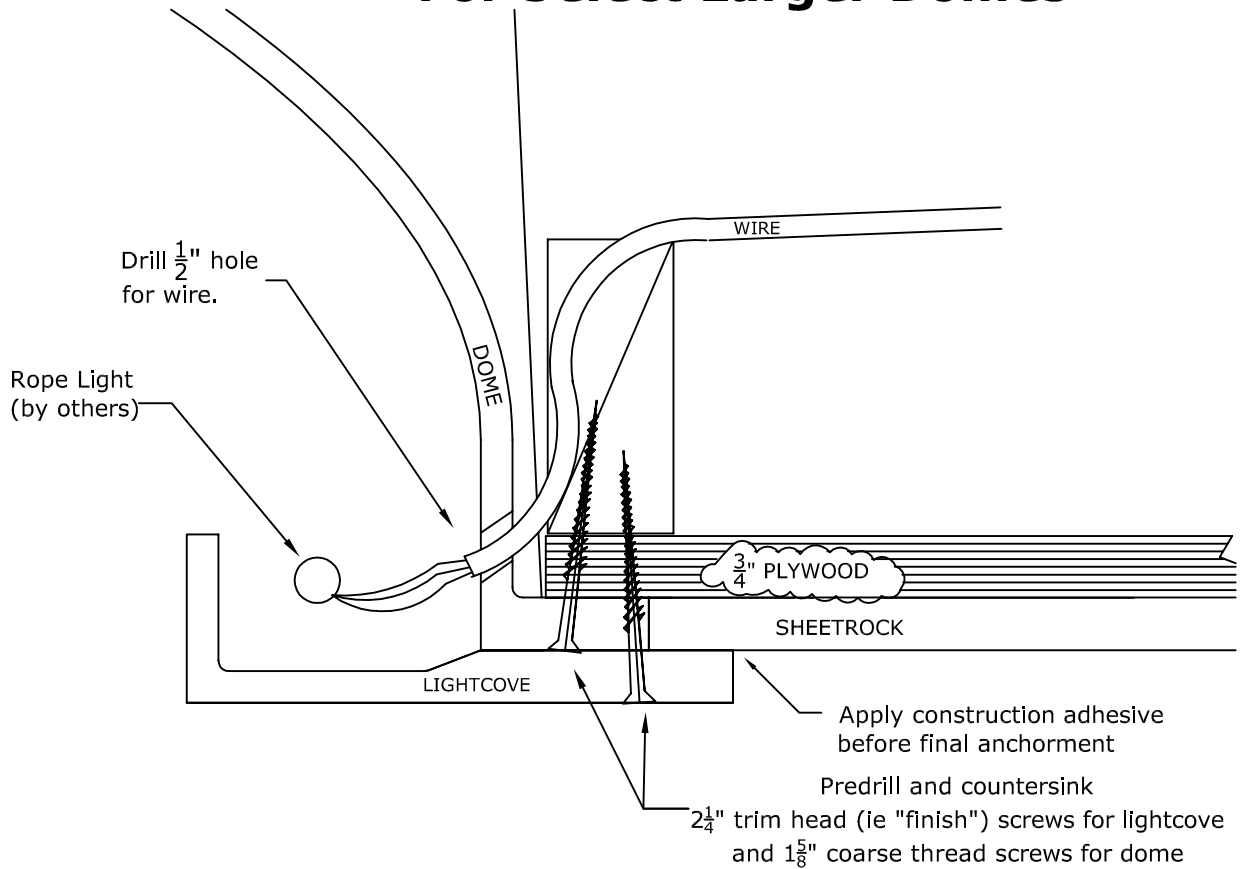
© Copyright 2017

RWM Inc.

6419 South Cottonwood Street, Murray, Utah 84107
 Phone: 801-268-2400 Toll Free: 1-855-RWM-ARTS (796-2787)
 Fax: 801-268-2522 E-mail: info@rwm-inc.com

Visit our website at www.rwm-inc.com

Contemporary Lightcover: For Select Larger Domes



We recommend a minimum of one point of anchor every 16" on lightcover. This is in addition to a minimum of one point of anchor every 16" for the dome bottom flange, and the recommended minimum of tiewire attachments for the dome. Check the spec sheet for your dome.

